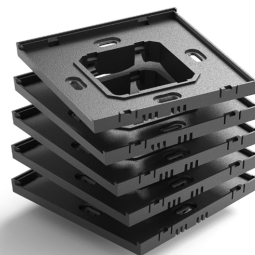


# Set of mounting plates for Legrand Mosaic (5 pcs)

TapHome mounting plate for Legrand Mosaic sockets. Pack of 5 pcs. Compatible with TapHome frames and socket parts.



## Quick Facts

Dimensions	80 × 80 × 10 mm
Operating temperature	-10 ... 60 °C
IP rating	IP20

The mounting plate for Legrand Mosaic sockets.

Order Code	5-FRAME-SINGLE-MOSAIC
EAN	 8586022938320

## Technical Specifications

GENERAL	
Material	PC/ABS
Compatibility	Legrand Mosaic + TapHome Socket Frame

## Variants

- **Product:** Installation of TapHome devices Touch Button 2nd generation, Multi-zone Controller
- **Socket** (Legrand Mosaic): Installation of Legrand Mosaic sockets with a design cover in a unified TapHome style
- **Standalone:** Originally supplied with TapHome devices. Installation of compatible devices that are standalone on the wall
- **Multi-frame:** Installation of compatible devices into a group - into a so-called multi-frame



**Product page**

<https://hardware.taphome.com/sada-montaznych-dosiek--5ks-mosaic/>

